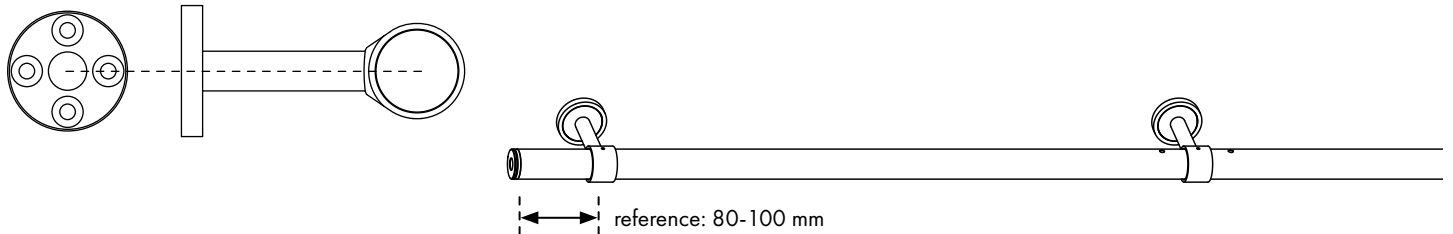


Installing Ø30 closed brackets Integral

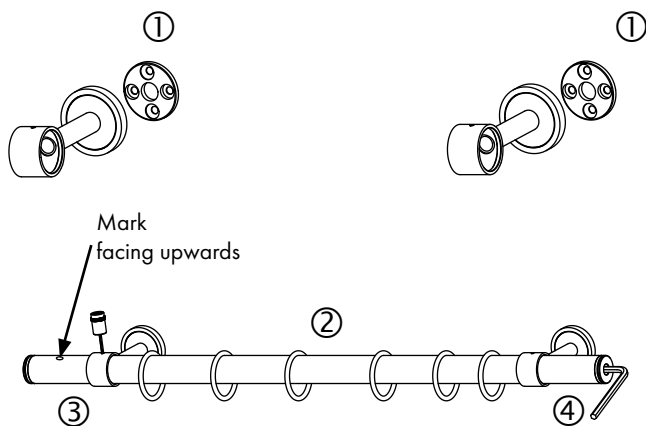
Dimensions for wall installation



Installation procedure

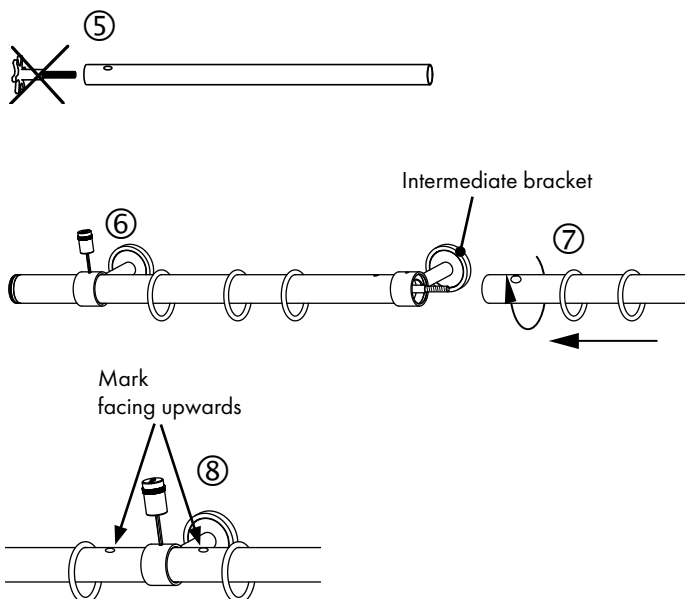
Without intermediate bracket

1. Attach the brackets to the wall ①
2. Adjust the pole at the sides ②
(slide the curtain rings on beforehand)
3. Firmly secure the pole in the bracket ③
(mark facing upwards)
4. Turn using an Allen key until the pole is straight ④
5. Screw on the finials



With intermediate bracket

1. Remove the transport locks ⑤
2. Attach one outer bracket and one intermediate bracket to the wall ①
4. Secure one half of the pole in the brackets using a threaded pin ⑥
(slide the curtain rings on beforehand)
5. Screw on the other half of the pole ⑦ and install the third bracket
(slide the curtain rings on beforehand)
6. Adjust the whole length of the pole and secure in the brackets ⑧
(mark facing upwards)
7. Turn on both sides using an Allen key until the entire pole is straight ④
8. Screw on the finials



With wall socket (only when without intermediate bracket)

- Attach the pole end with the mark to the wall socket ⑨

